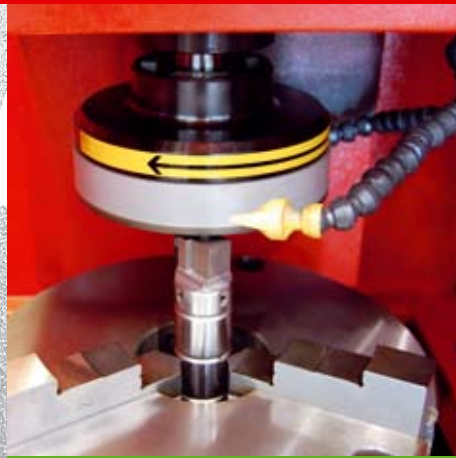
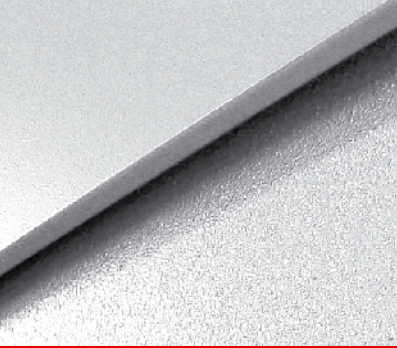
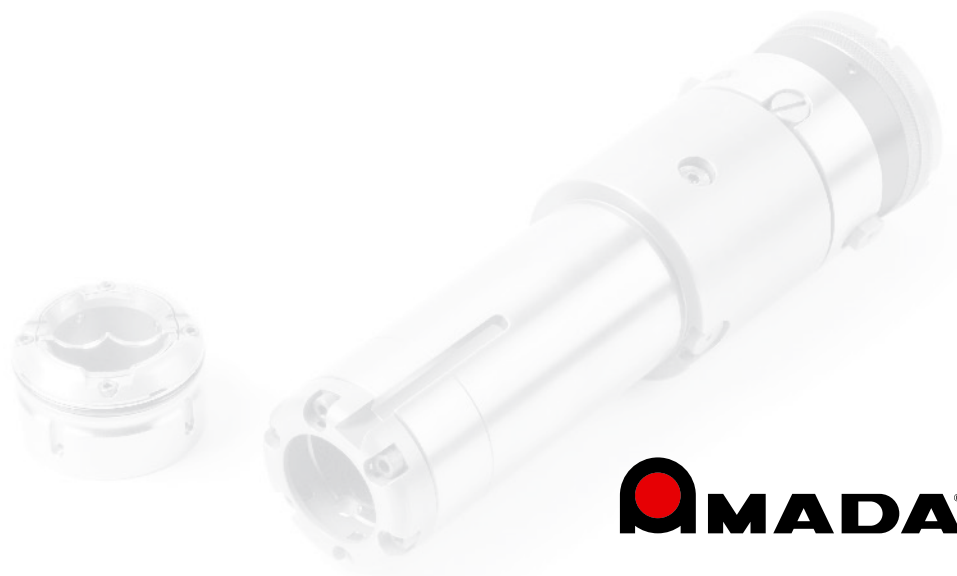
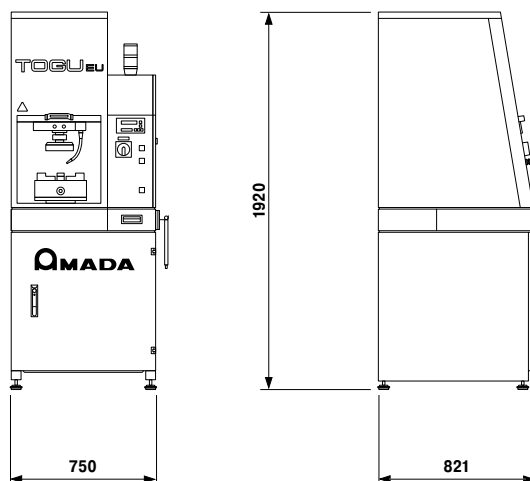


Tool Grinding Maschine TOGU EUN



Grinding technology





www.amada-gmbh.eu/togu

Technical data	TOGU-EUN
Minimum tool diameter	2 mm
Maximum tool diameter	160 mm
Maximum tool length	150 mm (three-jaw chuck)
Maximum grinding depth in mm	0.99 mm/cycle
Grinding motor infeed	240 mm
Power consumption	4.8 kVA, 400 V, 50 Hz
Motor power	
Spindle motor speed	1.5 kW, 3000 1/min
Feed motor for vertical traverse	step motor 200 W, 1/2000 interval
Turntable motor	120 W, 4P
Coolant pump motor	0.26 kW, 20 l/min
Speed	
Rapid feed speed	600 mm/min
Positioning speed	depend on station size
Grinding rate	0.06 mm/min (Type A) to 0.03 mm/min (Type E)
Dimension and weight	
Coolant capacity	20 l
Machine dimension	750 x 821 x 1920 mm (L x W x H)
Machine weight	450 kg



Amada GmbH
Amada Allee 1
42781 Haan
Germany

Tel. +49 2104 2126-0
Fax +49 2104 2126-999

info@amada.de
www.amada.de

Technical modifications reserved. Information on accuracy according to VDI/DGQ 3441.
Workpiece precision and material thickness to be processed are also dependent on production conditions,
material, type of workpiece, its pretreatment, table size as well as the location of the work area.